



Newly Released

Analog Input Module and Analog Output Module

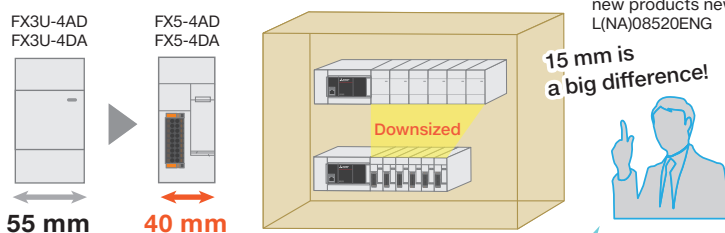
A standard model of FA control device adopting a spring clamp terminal blocks is newly added to the line-up!



For details, see the new products news. L(NA)08520ENG



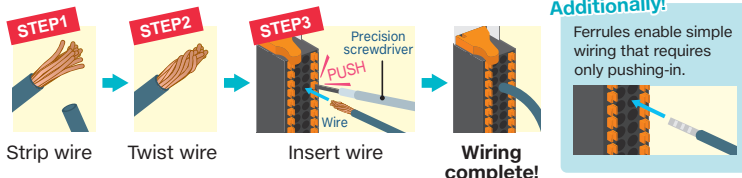
Point 1 Downsized 4AD 4DA



Since this product is compact, the device and the operation panel can be miniaturized.

Point 2 Adoption of spring clamp terminal blocks 4AD 4DA

No crimp connectors and crimp tools are needed. Wiring is completed easily in three steps!



NEW

Analog Input Module
FX5-4AD*1

NEW

Analog Output Module
FX5-4DA*1

Corresponding CPU module: FX5U/FX5UC*1 Ver. 1.050 or later

Point 3 Conversion speed "80 μs/ch" realized 4AD 4DA

Analog Input Module

FX3U-4AD 500 μs/ch

FX5-4AD 80 μs/ch

Time reduction to approx. 1/6!

Improved with faster conversion speed and wider range of use. Here are some examples!

Analog Output Module

FX3U-4DA 1000 μs*2

FX5-4DA 80 μs/ch

Time reduction to approx. 1/12*3!



*1: FX5-CNV-IFC or FX5-C1PS-5V is necessary to connect to the FX5UC CPU module.

*2: 1000 μs without regard to the number of channels.

*3: In the case of 1 ch use.

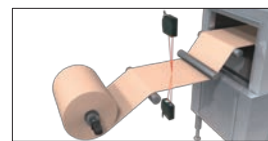
Point 4 Shape determination by continuous output of displacement sensor has been realized! 4AD

Conversion speed of 80 μs/ch has been realized, and it is useful for shape measurement/determination of products in various fields.

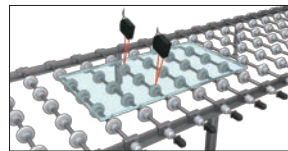
[Use examples]



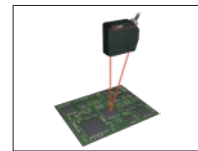
▲Checking the vehicle body assembling accuracy



▲Thickness measurement of metals and rubber (opaque objects)



▲Thickness determination of glass substrate



▲Height determination of chip parts

MELSEC iQ-F series introduction of questions example!

- For built-in CC-Link IE Field Network Basic -

Frequent inquiries received at our tech support call center

No. 1 Q

Are these products supporting CC-Link IE Field Network Basic?

A

They are corresponding to a master station of CC-Link IE Field Network Basic which uses a built-in Ethernet port of a CPU module. The FX5U/FX5UC CPU module firmware Ver. 1040 or later supports this feature.

No. 2 Q

What kind of software is required for setting?

A

Use GX Works3, and set in [FX5UCPU] of the parameter, [Module Parameter], [Ethernet port], and [CC-Link IEF Basic Setting]. GX Works3 Ver. 1.030G or later supports this feature.

No. 3 Q

How many slave station units and link points are usable at most?

A

For slave station, up to 6 units can be connected. For total link points, RX/RX can be controlled up to 384 points, and RWr/RWw can be controlled up to 192 points.



Information of the latest leaflet (MELSOFT Library Utilization Example Leaflet)

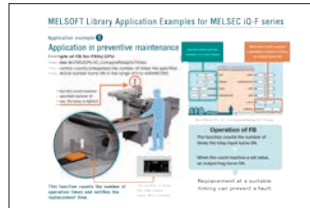
A new era of programming, not "Write", but "Choose"!



L(NA)08559ENG

MELSOFT Library attached to GX Works3 has a wide variety of FBs and sample ladders. Also, the latest version can be downloaded from Mitsubishi Electric FA website. This material explains about advantages of FB which realizes easy, quick, and easy-to-see programming and the application examples of FB.

Application examples help you grasp an image of FB.



What is FB?

It is an abbreviation for function block, and componentization of a circuit block which is repeatedly used in a sequence program.

Information on discontinuation (1 Temperature control block FX2N-2LC 2 Programmable controller training software FX-TRN-□□)

1 Temperature control block FX2N-2LC



Discontinued
March 31, 2018



Substitute products

FX3U-4LC



[Corresponding CPU modules]
- FX3G, FX3GC from initial products*1
- FX3U, FX3UC Ver. 2.20 or later*2
- FX5U, FX5UC from initial products*3

or

FX5-4LC



[Corresponding CPU modules]
- FX5U, FX5UC Ver. 1.050 or later*4

- *1: FX2NC-CNV-IF or FX3UC-1PS-5V is necessary to connect to the FX3GC CPU module.
- *2: FX2NC-CNV-IF or FX3UC-1PS-5V is necessary to connect to the FX3UC CPU module.
- *3: FX5-CNV-BUS or FX5-CNV-BUSC is necessary to connect to the FX5U/FX5UC CPU module.
- *4: FX5-CNV-IFC or FX5-C1PS-5V is necessary to connect to the FX5UC CPU module.

2 Programmable controller training software FX-TRN-□□



Beginner

Discontinued
March 31, 2018

- Applicable models for discontinued

| | | |
|-------------------------------|--------------------|----------------|
| Beginner [English] | FX-TRN-BEG-E | |
| Product with multiple license | Beginner [English] | FX-TRN-BEG-EA |
| Product with added license | Beginner [English] | FX-TRN-BEG-EAZ |

MITSUBISHI ELECTRIC CORPORATION

Please contact your nearest Mitsubishi Electric representative for more information.

⚠ Safety Warning

To ensure proper use of the products in this document, please be sure to read the instruction manual prior to use.

Registration

Ethernet is a trademark of Xerox Corporation.
All other company names and product names used in this document are trademarks or registered trademarks of their respective companies.