



Quick Start IoT starting with MELSEC iQ-F

NEW User Web Page Design Tool*1

For free

The "Web server function" offers remote monitoring from your PC, smartphone or tablet. By using the User Web Page Design Tool, you can easily create Web pages for equipment monitoring and operation screens.

Conventional (Creation using HTML tags)

```

1 <html>
2   <meta charset="UTF-8" />
3   <meta http-equiv="X-UA-Compatible" content="IE=edge" />
4   <title>001.html</title>
5   <link href="" rel="stylesheet" media="all" />
6   <script src="" />
7   <script src="" />
8   <script src="" />
9   <script src="" />
10  </html>
    
```

Isn't it difficult to create Web pages from scratch without the knowledge of HTML tags?

Design your operational screens simply by using the User Web Page Design Tool with its simple components!



★ Recommended points

Because basic operations are integrated, editing can be completed with only this tool.

Design window



Click the preview button [P]!

A preview image is automatically displayed.

1 This tool offers many components and sample images. You can design screens very easily!



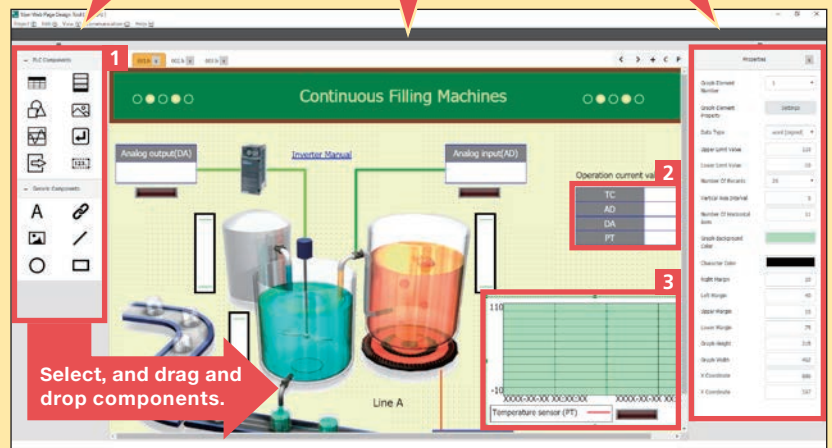
2 Data of any devices are displayed in a list.

3 Changes of analog values etc. are displayed in a graph.

14 types of components are provided! Just select and lay out your desired components!

HTML to be displayed in a Web browser is created visually.

Set details of components.



Select, and drag and drop components.

Additionally:

By using the file transfer function (FTP server function), you can write the HTML files without exchanging SD memory cards. You can update data very easily!

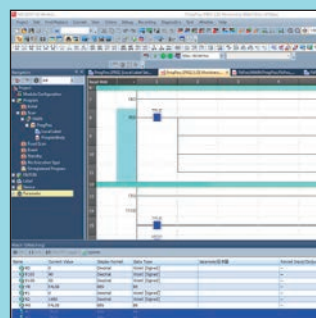
For details, refer to User Web Page Design Tool Operating Manual (SH(NA)-082315ENG).

+ONE You can verify screens using the simulation function*2 of GX Works3.

This tool can simulate user Web pages in cooperation with GX Works3. You can check user Web pages even before verification using actual equipment, and correct Web pages immediately if necessary.



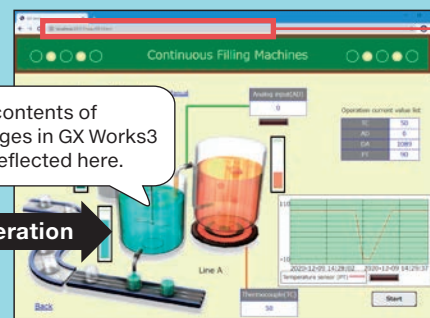
You can simulate a program and check a user Web page at the same time.



GX Works3

Cooperation

The contents of changes in GX Works3 are reflected here.



Web browser

You can access the user Web page by using the URL below.
<http://localhost:20111/>*3

*1: Supported by FX5U/FX5UC CPU module Ver. 1.220 or later.

*2: Supported by GX Works3 Ver. 1.055H or later.

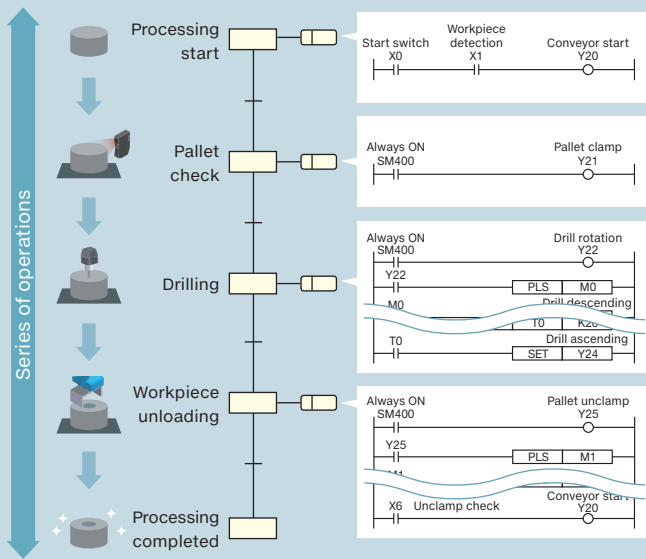
*3: When you use system simulation, input the port number displayed on the GX Simulator3 (System Simulation) screen. ([http://localhost:\(own station port number\)/](http://localhost:(own station port number)/))



MELSEC iQ-F series
New function!

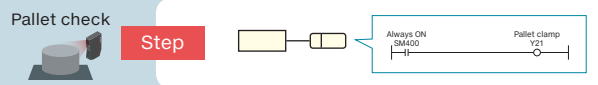
MELSEC iQ-F × GX Works3 Sequential Function Chart*1!

SFC program image for a drilling process



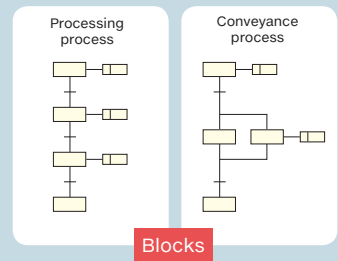
SFC can express equipment operations in operation units!

An SFC program can express each operation unit in a series of operations of equipment as one step. In each step, actual detailed control can be programmed using ladder language, ST language, FBD/LD language and others.



Operations can be controlled in block units!

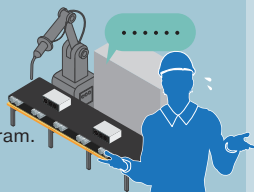
You can program one control unit for each process, each product or automatic operation/manual operation as one block. You are required to create many blocks first. You can control actual equipment by starting only specific blocks according to your purpose or application and aborting or finishing processing.



SFC can ease your troubles!

It is troublesome to grasp a complicated program...

- » Processes, flows and operations of such a program are complicated.
- » It takes considerable time to grasp such a program.
- » It is difficult to detect where the trouble occurs.

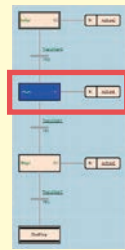


Because each process is displayed, it is easy to detect where the trouble occurs!

It is easy to detect steps (processes) where trouble occurs in the block (equipment).

SFC can be a solution!

Oh! here's where the program stopped. Let's look up!



It takes considerable time to make a program...

- » It is a hard work to create a program from scratch.
- » I would like to reuse an FX3 series program, which is already stored.



FX3 series programs can be used!

Your FX3 series (GX Works2) SFC programs can now be converted and used with FX5U (GX Works3)!*2

SFC can be a solution!



Assets can be reused, and program creation man-hours can be reduced!



*1: Supported by FX5U/FX5UC CPU module Ver. 1.220 or later and by GX Works3 Ver. 1.070Y or later.

*2: There are precautions in replacement from the FX3 series to the FX5U. For details, refer to Transition from MELSEC FX3G, FX3U, FX3UC Series to MELSEC iQ-F Series Handbook (JY997D66201).

MITSUBISHI ELECTRIC CORPORATION
Please contact your nearest Mitsubishi Electric representative for more information.

⚠ Safety Warning

To ensure proper use of the products in this document, please be sure to read the instruction manual prior to use.

Registration

The company names, system names and product names mentioned in this document are either registered trademarks or trademarks of their respective companies. In some cases, trademark symbols such as "™" or "®" are not specified in this document.