

Faster, Reliable Connections with a Diversity of Actuators

e-Factory



MELSEC iQ-F
series

MELSEC iQ-R
series

Faster connection set-up with actuators!

Faster and easier... Mitsubishi Electric MELSEC PLC programmer/ actuator combinations support smooth, quick system set-up!

Collaborating
Compatible
Manufacturers

IAI Corporation

Oriental Motor Co., Ltd.

SMC Corporation

Positioning Communication Protocol Support Tool...

- Serial communication ensures easy connection
- Connect via MELSEC iQ-F Series built-in port

Compatible Lineup

Modules compatible with Positioning Communication Protocol Support Tool

Model Name	Overview	IAI	Oriental Motor	SMC
MELSEC iQ-R Series	Serial Communication Unit			
MELSEC iQ-F Series	FX5U(C) CPU Unit (Built-in RS-485, communication expansion board, communication adapter)	16 axes	31 axes	32 axes

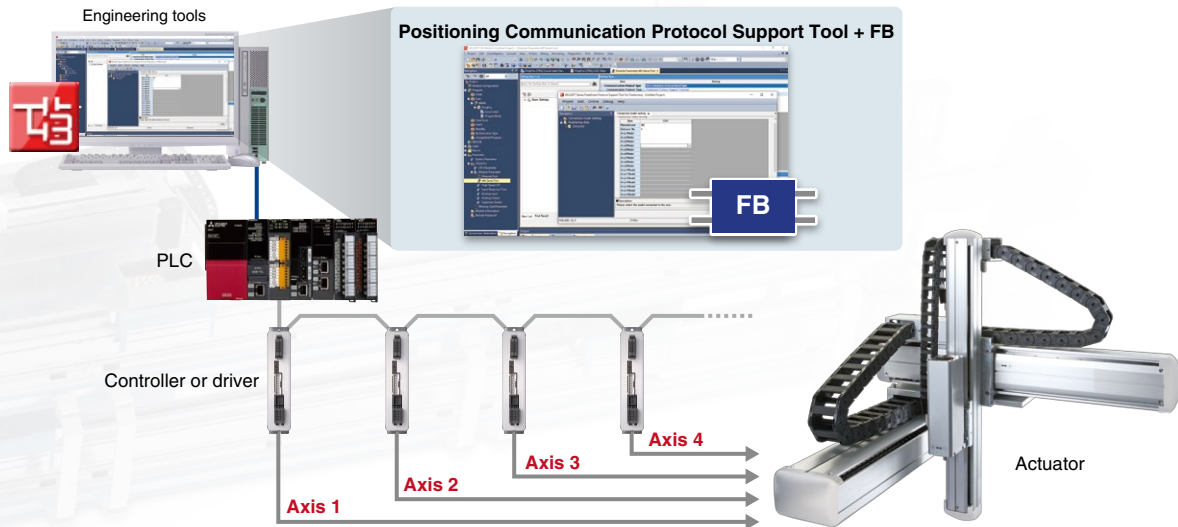
* Actuator connection via serial communication (MODBUS[®]/RTU).

Free download

Positioning Communication Protocol Support Tool + FB

Mitsubishi Electric MELSEC PLCs are equipped with a Positioning Communication Protocol Support Tool, enabling easy connection with electric actuators.

This tool contributes to reducing the time required to start-up customers' systems as well as the time required for maintenance. Moreover, Positioning Communication Protocol Support FB minimizes programming work.



Features of Positioning Communication Protocol Support Tool +FB!

Point 1

Automatic setting of communication protocol

Point 2

Confirm operations without a program

Point 3

FB reduces the time required for programming



GX Works3

Engineering costs are reduced even further with easy programming using a simple selection method aided by graphics and intuitive operability. There's also a diagnostics function that simplifies troubleshooting.



MELSEC iQ-R Series

Innovative next-generation controllers pioneering a new age in automation. Equipped with a newly developed, high-speed system bus, takt time is reduced significantly.



MELSEC iQ-F Series

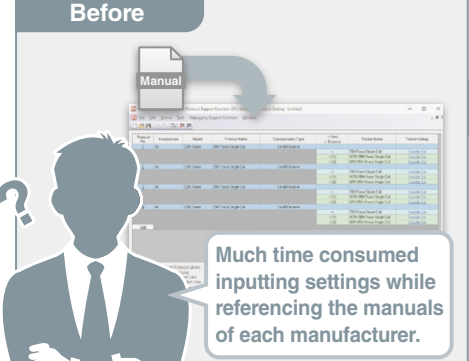
Next-generation micro-PLCs equipped with a high-speed system bus and enhanced built-in functions, and compatibility with an abundance of networks. Having a range of proposals from stand-alone to whole systems including networks, the MELSEC iQ-F Series powerfully supports customers' "one-step-ahead" manufacturing.

Solving Three Problems Customers Face!

Do you find connecting actuators difficult due to the time required for programming, setting communications, etc.? Our Positioning Communication Protocol Support function solves these problems.

1 Reduces Design Work

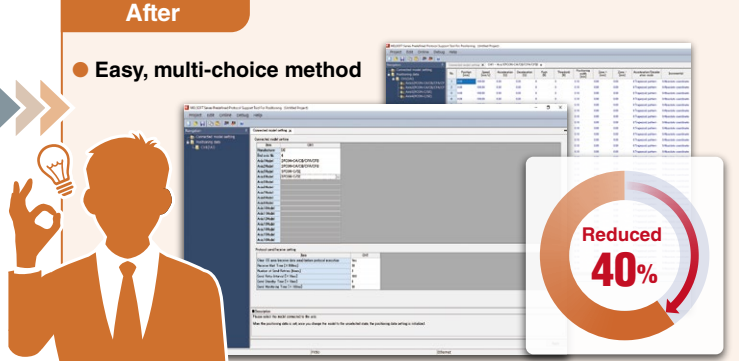
Before



Much time consumed inputting settings while referencing the manuals of each manufacturer.

After

● Easy, multi-choice method



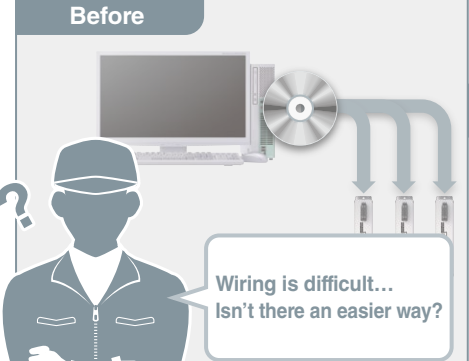
Reduced 40%

Necessary to check protocol specifications for each device.

Using the Positioning Communication Protocol Support Tool, only simple settings related to system configuration are required to automatically set the communication protocol.

2 Reduces Wiring Work

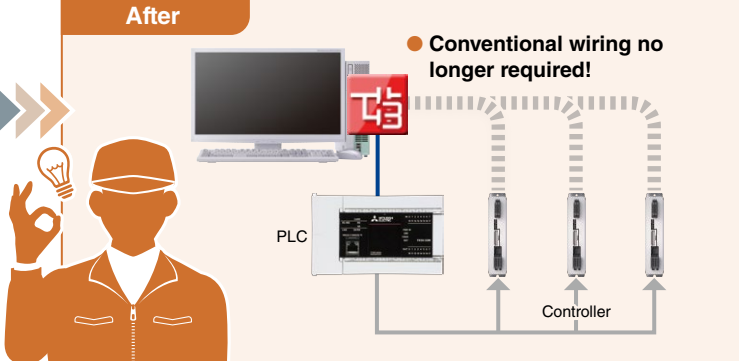
Before



Wiring is difficult... Isn't there an easier way?

After

● Conventional wiring no longer required!



PLC

Controller

Each controller requires wiring for positioning data writing. Special-purpose software are needed as well.

Positioning data is written from the Positioning Communication Protocol Support Tool to the controller, thereby eliminating wiring between computers and controllers.

3 Reduces Debugging Work

Before



Can't debugging be easier...?

After

● Actuator condition understood instantly!
● Operations can be checked without a program!



Hard to understand the actuator condition. Separate programming required for debugging.

Device operation status can be viewed on the tool's screen, thereby significantly improving debugging efficiency.

Preparations Prior to Use

Please download the Positioning Communication Protocol Support Tool and Positioning Communication Protocol Support FB from the Mitsubishi Electric FA site prior to use.

Positioning Communication Protocol Support Tool

Free download

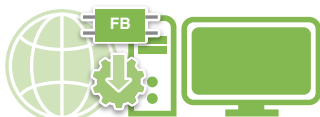


Download the Positioning Communication Protocol Support Tool from the Mitsubishi Electric FA site for free.

FA Site ▶ Download ▶ Control Equipment PLC ▶ MELSEC iQ-R ▶ Software ▶ Setting Tool ▶ Positioning Communication Protocol Support Tool

Positioning Communication Protocol Support FB

Free download



You can download the Positioning Communication Protocol Support FB from the Mitsubishi Electric FA site for free.

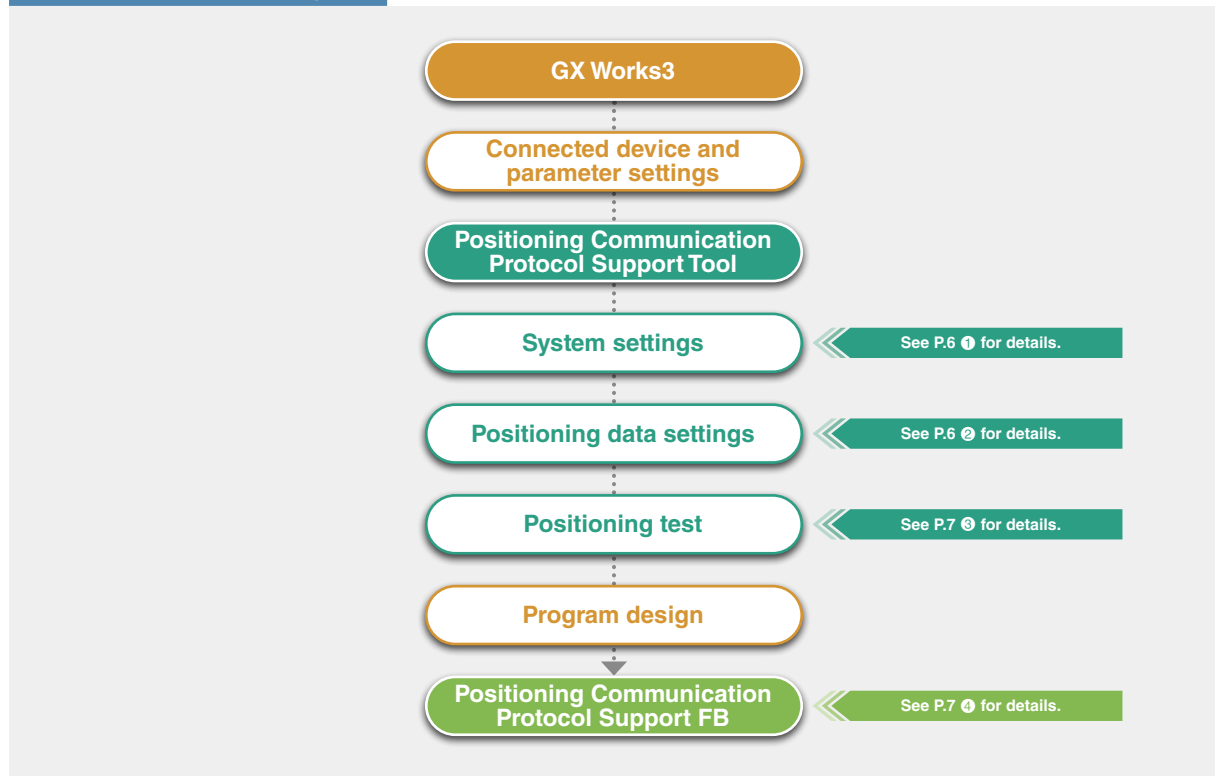
MELSEC iQ-R Series

FA Site ▶ Download ▶ Control Equipment PLC ▶ MELSEC iQ-R ▶ Sample Library ▶ Sample Program Library ▶ Information/Network Unit ▶ Serial Communication ▶ FB

MELSEC iQ-F Series

FA Site ▶ Download ▶ Control Equipment PLC ▶ MELSEC iQ-F ▶ Sample Library ▶ Sample Program Library ▶ CPU Unit ▶ PLC CPU Unit ▶ FB

Development and Design



Positioning Communication Protocol Support Function Flow

Collaboration functions provide powerful support to suit customers' specific manufacturing configurations!

1 System Settings

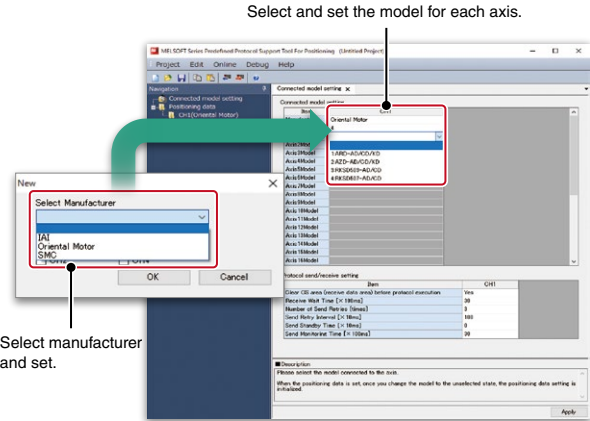
Positioning Communication Protocol Support Tool

Use the support tool to complete system configuration settings and link communication with the controller.

Simply set communication protocol by selecting each manufacturer's model for connection.

Manufacturer	Type	Series
IAI Corporation	Controller built-in type actuators	RCP6S*/ERC3/ERC2
	Controllers	PCON/DCON/ACON/SCON*
Oriental Motor Co., Ltd.	αSTEP drivers	AR/AZ
	Stepping motor drivers	RKII
SMC Corporation	Controller step data input type	LECP6/LECA6

* There are limitations to use. Please check the manual for details.



Number of axes that can be set for each channel.

- IAI 16 axes
- Oriental Motor 31 axes
- SMC 32 axes

Point !
There is no need to confirm the protocol specifications of each device, thereby reducing the time required for conventional protocol design.

2 Positioning Data Settings

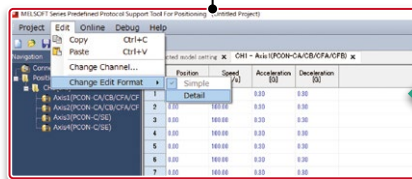
Positioning Communication Protocol Support Tool

Positioning data is set to control the position of the electric actuator of the connected device. Settings include positioning of the electric actuator, speed, acceleration rate, and deceleration rate.

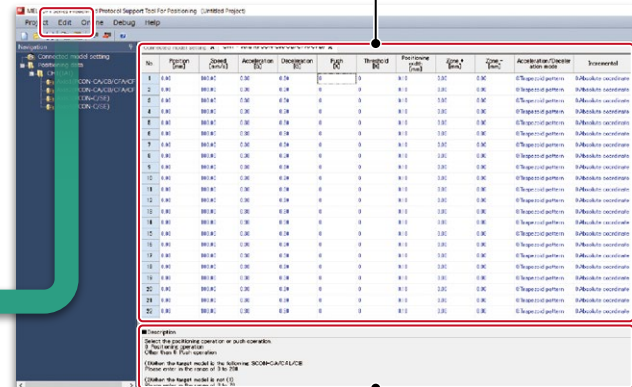
Equivalent to the below data for each manufacturer's controller.

- IAI Position data
- Oriental Motor Operating data
- SMC Step data

Users can switch between simple and detailed views of setting items from the menu and optimize the display depending on which items are necessary/unnecessary for a specific system.



Set up to 64 data items per axis. Acceleration/Deceleration items can be set individually.

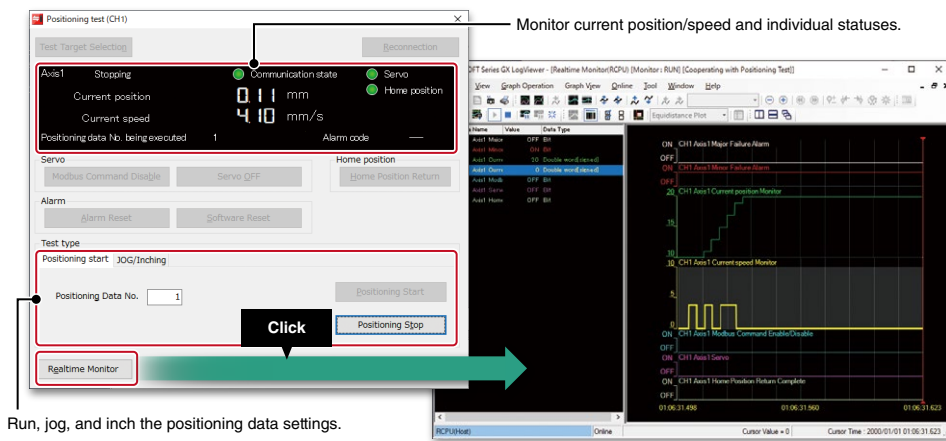


Point !
Displays guidance providing a description of each item setting and range.
Electric actuator operations controlled by specifying positioning data written to the controller.

3 Positioning Test

Positioning Communication Protocol Support Tool

Positioning operation of the electric actuator can be performed on a special-purpose screen. The device operation status is visible on the tool screen, thereby significantly improving debugging efficiency.



Real-time Monitor

- Seamlessly links with GX LogViewer for chart monitoring of current position and speed.
- Only compatible with MELSEC IQ-R Series.

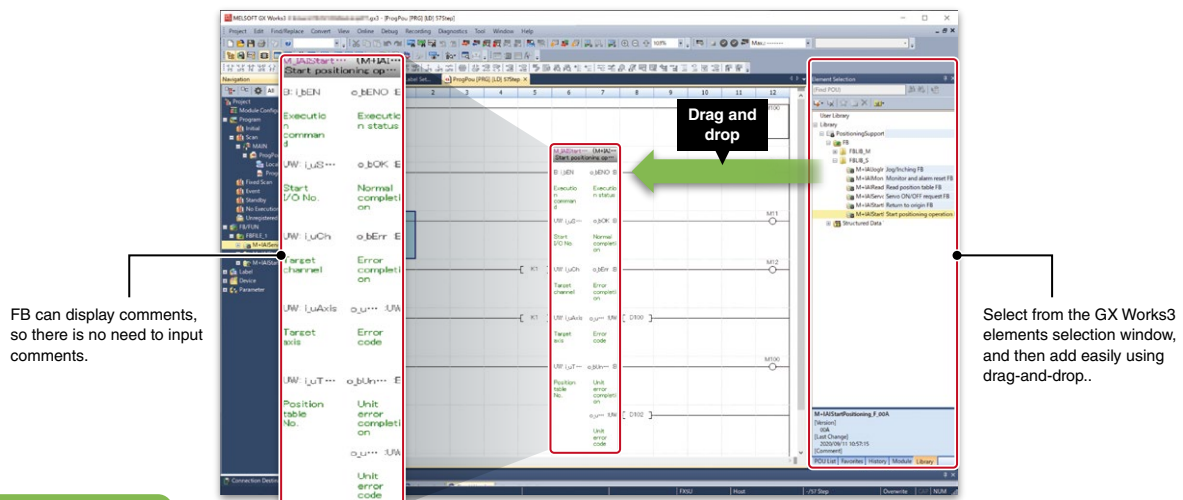
Point !

Debug positioning control without creating a program, realizing smooth, quick system start-up.

4 Positioning Communication Protocol Support FB

Positioning Communication Protocol Support FB

Easily achieves positioning control such as servo on/off, home position recovery, positioning start, etc. using the special-purpose FB (Positioning Communication Protocol Support FB Library) from the program.



Point !

Supports creating electric actuator control programs.

Screen Samples for Direct Connection to GOT!



It's time-consuming to create screens from scratch.

We have prepared sample screens for monitoring actuator current position and setting values, as well as for making changes.

GOT2000 Series Connection Screen Samples

Sample screens for connection between GOT2000 and each actuator can be downloaded from the Mitsubishi Electric FA site.

These help to reduce the time required to develop GOT display screens and connect actuators.

IAI Corporation	Oriental Motor Co., Ltd.	SMC Corporation
Robot controller SCON Series	Stepper motor unit αSTEP	Controller LEC Series

Country/Region Sales office
 USA+1-847-478-2100
 Mexico+52-55-3067-7512
 Brazil+55-11-4689-3000
 Germany+49-2102-486-0
 UK+44-1707-28-8780
 Ireland+353-1-4198800
 Italy+39-039-60531
 Spain+34-935-65-3131
 France+33-1-55-68-55-68

Czech Republic ... +420-255-719-200
 Poland+48-12-347-65-00
 Sweden+46-8-625-10-00
 Russia+7-812-633-3497
 Turkey+90-216-526-3990
 UAE+971-4-3724716
 South Africa+27-11-658-8100
 China+86-21-2322-3030
 Taiwan+886-2-2299-2499

Korea+82-2-3660-9569
 Singapore+65-6473-2308
 Thailand+66-2092-8600
 Vietnam+84-28-3910-5945
 Indonesia+62-21-31926461
 India+91-20-2710-2000
 Australia+61-2-9684-7777

• Company names and product names used in this document are trademarks or registered trademarks of their respective companies.

⚠ For safe use
 • To use the products listed in this publication properly, always read the relevant manuals before use.

MITSUBISHI ELECTRIC CORPORATION
 HEAD OFFICE: TOKYO BLDG., 2-7-3, MARUNOUCHI, CHIYODA-KU, TOKYO 100-8310, JAPAN
www.MitsubishiElectric.com