

PRINTER DRIVER GUIDE

(For Macintosh® CP-W5000 series)

Macintosh, Apple, and Mac OS are trademarks of Apple Inc.

Adobe, Adobe Photoshop are registered trademarks of Adobe Systems.

The various software packages mentioned in this manual are the registered trademarks of their respective companies.

Refer to the following web site to check the latest version of the printer driver.

http://www.MitsubishiElectric.co.jp/vcp/support/driver_en.html

You can not use different version of the driver at the same time.

When the driver has already installed, uninstall it and then install this driver.

System requirements

Computer : PowerMacintosh G4, G5, PowerBookG4, iMac, Mac mini,
MacBook, MacBook Pro, Mac Pro, MacBook Air

Main storage memory : 512 Mbytes or more

Hard disk : Empty capacity 512 Mbytes or more

Operating system : 10.6, 10.7, 10.8, 10.9, 10.10

USB^{*1} cable : Be sure to use a cable 2m or shorter.

* Use the printer driver in an environment that your operating system works properly.

*1: CP-W5000 series printer supports USB 2.0 (Hi-Speed USB) interface. As USB 2.0 is fully upward-compatible with USB 1.1, CP-W5000 series printer can be used with a personal computer that supports USB 1.1 interface.

To use CP-W5000 series printer based on USB 2.0 (Hi-Speed USB), connect with a personal computer that supports USB 2.0 (Hi-Speed USB). For USB 2.0 (Hi-Speed USB) compatibility of your personal computer, contact the manufacturer of the personal computer.

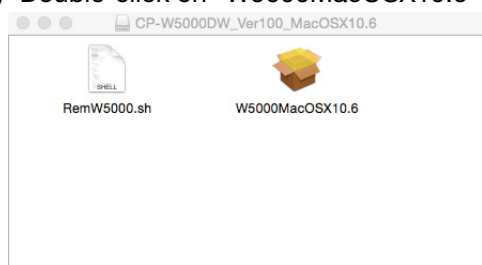
Installation

Administrator authority is required to install this printer driver.

When the printer driver of older version has been installed, uninstall it before installing this driver.

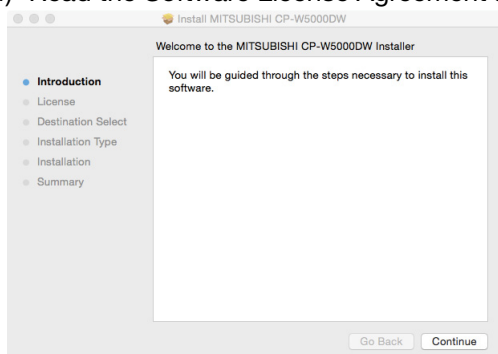
* Although the screen of the display is an installation screen of Mac OS X 10.10, operating procedures are the same as any other Mac OS X.

- 1) Start your Macintosh.
- 2) Double-click on “W5000MacOSX10.6” of the folder. (Fig. 1)

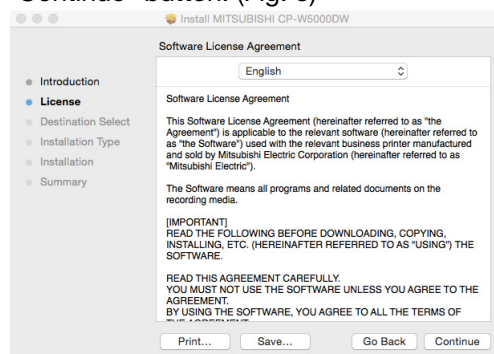


<Fig. 1>

- 3) Click “Continue” button in the “Install MITSUBISHI CP-W5000DW.” (Fig. 2)
- 4) Read the Software License Agreement and click “Continue” button. (Fig. 3)

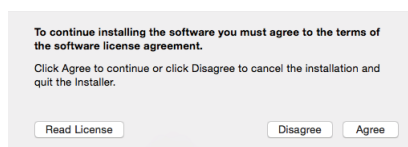


<Fig. 2>

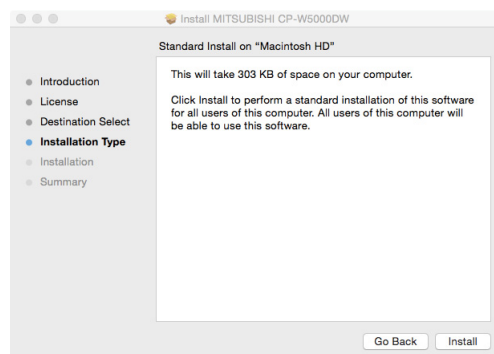


<Fig. 3>

- 5) When you agree with the terms and conditions of the Agreement, click “Agree.” (Fig. 4)
- 6) Click “Install” button. (Fig. 5)

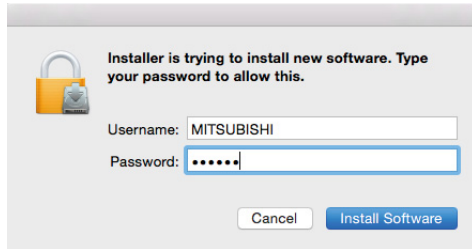


<Fig. 4>



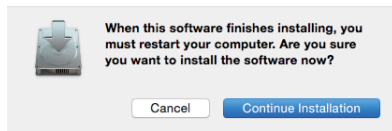
<Fig. 5>

- 7) Enter a username and password, and click “Install Software” button. (Fig. 6)
 (“Install Software” button: “OK” button in Mac OS X 10.6)

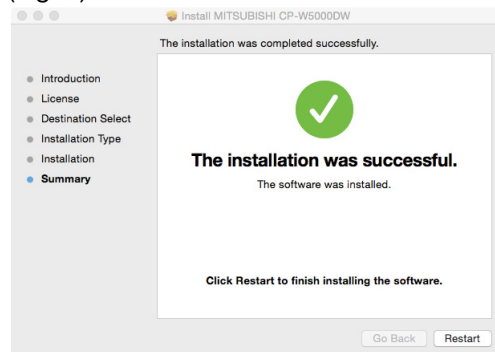


<Fig. 6>

- 8) Click “Continue Installation.” (Fig. 7)
 9) Click “Restart” to restart the personal computer. (Fig. 8)

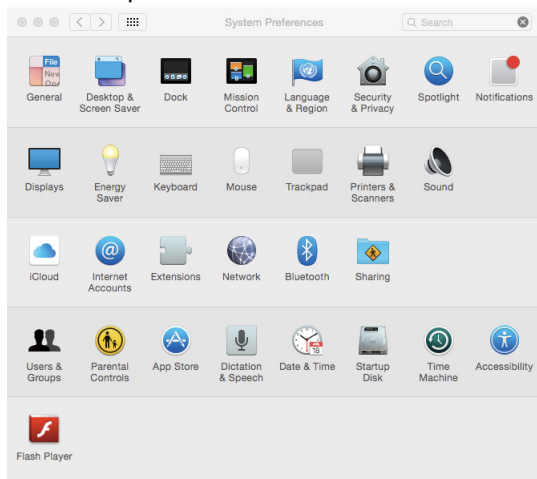


<Fig. 7>

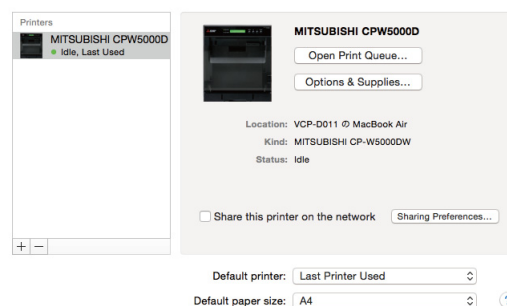


<Fig. 8>

- 10) Turn on the printer and connect it with the personal computer.
 11) Click “System Preferences” to display “System Preferences” screen. (Fig. 9)
 12) Click “Printers & Scanners” on “System Preferences screen.”
 The installed printer is automatically added to the “Printers.” (Fig. 10)
 (“Printers & Scanners”: “Print & Fax” in Mac OS X 10.6 and “Print & Scan” in Mac OS X 10.7 and 10.8)
 * This printer is added in the name of “MITSUBISHI CPW5000D.”



<Fig.9>



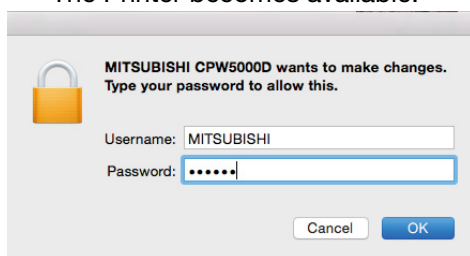
<Fig.10>

<Notes on installation on Mac OS X 10.8, 10.9, and 10.10>

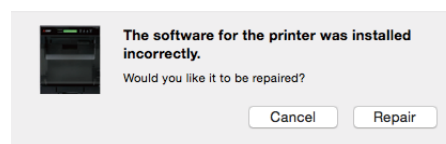
The following correspondence may be necessary at the time of installation to Mac OS X 10.8, 10.9, and 10.10.

Please install according to follows.

1. When attempting to install the Mac OS X driver downloaded from web site
You may receive a message window that shows “ “W5000MacOSX10.6” can’t be opened because it is from an unidentified developer.” during installation is displayed.
In this case, click “OK” button on this window and follow the steps below.
 - 1) Click the installer package while holding Control key.
 - 2) Click “Open” on the context menu.
 - 3) Click “Open” button on the message window that shows “ “W5000MacOSX10.6” is from an unidentified developer. Are you sure want to open it?.”
Installation will start.
2. About operation after the installation completion of the driver
After the installation completion of the driver, please operate follows.
 - 1) After completion of the driver installation, open “System Preferences” and select “Printers & Scanners.”
 - 2) Select the installed printer in the printer list and click “Open Print Queue...” button.
 (“Printers & Scanners”: “Print & Scan” in Mac OS X 10.8)
 - 3) Enter a username and password, and click “OK” button. (Fig. 11)
This screen appears in Mac OS X 10.10.
 - 4) Click “Repair” button (Fig.12).
The Printer becomes available.



<Fig. 11>



<Fig. 12>

Uninstallation

Operate the following procedures to uninstall the printer driver.

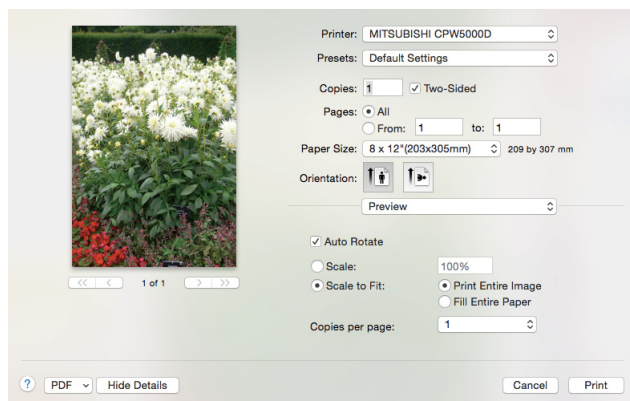
- 1) Start “Terminal” of “Utility” in the “Applications” folder.
- 2) When you do not have administrator authority, obtain it by “su” command.
- 3) Go to the directory where the uninstallation script (RemW5000.sh) is stored and execute the script.
./RemW5000.sh
- 4) When a password is required, enter the password for the administrator.
- 5) When uninstallation is completed successfully, the following message is displayed.
Uninstallation was completed.
Is a computer rebooted?” (Y/N):
- 6) Enter “Y” or “y” to reboot the computer.
If the computer is not rebooted automatically, exit the ongoing applications and reboot the computer manually.

Function explanation

1. Print Settings

* Although the screen of the display of "Preview" application, the following menu display is the same in the other applications.

1.1. Preview menu



<Fig. 13 Preview menu>

1) Paper Size

The size of paper is selected.

The number of print pixels for each paper size is shown in the table.

Paper size	Print dots
8 x 12" (203 x 305 mm)	2464 x 3624
8 x 11.7" (203 x 297 mm)	2464 x 3534
8 x 11" (203 x 279 mm)	2464 x 3324
8 x 10" (203 x 254 mm)	2464 x 3024
8 x 8" (203 x 203 mm)	2464 x 2424
8 x 6" (203 x 152 mm)	2464 x 1824
8 x 4" (203 x 102 mm)	2464 x 1224
7 x 5" (178 x 127 mm)	2164 x 1524
6.8 x 9.6" (173 x 244 mm)	2104 x 2904
6.8 x 4.8" (173 x 122 mm)	2104 x 1464
6 x 12" (152 x 305 mm)	1864 x 3624
6 x 6" (152 x 152 mm)	1864 x 1824
6 x 4" (152 x 102 mm)	1864 x 1224
8 x 6" x 2 (203 x 152 mm x 2)	2464 x 3684
8 x 4" x 2 (203 x 102 mm x 2)	2464 x 2484
8 x 4" x 3 (203 x 102 mm x 3)	2464 x 3744
7 x 5" x 2 (178 x 127 mm x 2)	2164 x 3084
6 x 4" x 2 (152 x 102 mm x 2)	1864 x 2484
6 x 4" x 3 (152 x 102mm x 3)	1864 x 3744

The print pixels vary depending on the setting of Paper Size.

2) Orientation

The direction of paper is set.

This is the standard setting function of the operation system.

3) Scale

Enlargement scale is set. (Range : 25 - 400%)

This is the standard setting function of the operation system.

4) Copies

The printer prints the number of printouts which is shown in dialog. (Range: 1 – 9999)

* This is the standard setting function of the operation system.

5) Two-Sided

The print side is set.

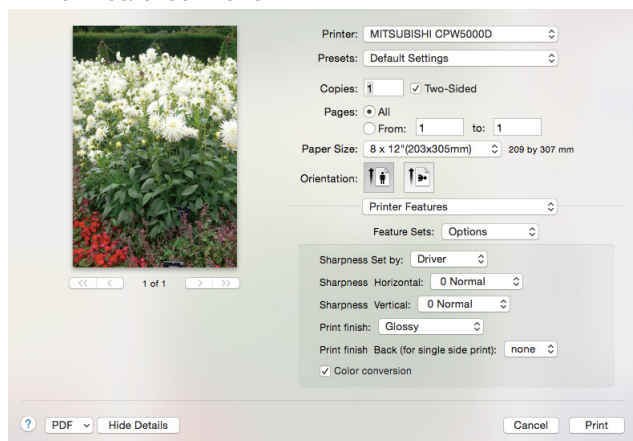
Not checked: Single-sided print.

Checked : Two-sided print.

* This is the standard setting function of the operation system.

1.2. Printer Features menu

The following settings can be configured when “Feature Sets” of “Printer Features” is set to “Options” in the Printer Features menu.



<Fig.14 Printer Features menu>

1) Sharpness Set by

Set sharpness mode by driver setting or setting by printer inside.

Driver : Set sharpness parameter by driver.

Printer : Set sharpness parameter by printer inside.

2) Sharpness Horizontal

none/-3 Soft/-2/-1/0 Normal/1/2/3/4 Hard

Level of outline correction is changed in the horizontal direction.

none : Not perform the outline correction.

-3 to 4 : The value is smaller, the outline becomes softer.

The value is larger, the outline becomes sharper.

* This setting works when “Sharpness Set by” is set for “Driver”.

3) Sharpness Vertical

none/-3 Soft/-2/-1/0 Normal/1/2/3/4 Hard

Level of outline correction is changed in the vertical direction.

none : Not perform the outline correction.

-3 to 4 : The value is smaller, the outline becomes softer.

The value is larger, the outline becomes sharper.

* This setting works when “Sharpness Set by” is set for “Driver”.

4) Print finish

Set the print surface finish mode for Two-sided print and single-sided print surface.

Glossy : Gloss finish

Semi-glossy : Semi-gloss finish

Matte : Matte finish

[Notes]

* In Mac OS 10.6 when you print the job of one page at Two-sided printing, it will not be printed out before sending the side B of the image.

If the image data of the side B is not sent within the time limit set by “TIME OUT”, the side B will be blank page and its finish is the same as side A.

[About “TIME OUT”]

You can set “TIME OUT” by printer. For setting “TIME OUT” please refer to the operation manual of CP-W5000 series printer.

- * In Mac OS 10.6 when you print the job of one page in multiple copies on Two-sided printing, the same image is printed on the side A and the side B.
When you print the job of one page, please set “Single-sided print” and “Print finish Back (for single side print)”.

[About “side A”, “side B”]

side A : it will be printed on the inner surface of the paper roll.

side B : it will be printed on the outer surface of the paper roll.

- * When Two-sided printing of two or more pages, if you print the odd number images, the side B of last page print out in blank page.
And the side B of the last print (blank page) will have the same finish as side A.
In Two-sided printing, it is recommended that you print the even number images.
- * In Mac OS 10.7 to 10.10 when you print the job of one page at Two-sided printing, it becomes Single-sided printing and the print finish of back will be as specified by the setting of Print finish Back (for single side print) explained in the following paragraph.
When you print the job of one page, please set “Single-sided print” and “Print finish Back (for single side print)”.

5) Print finish Back (for single side print)

Set the print finish mode for single print backside.

Glossy : Gloss finish

Semi-glossy : Semi-gloss finish

Matte : Matte finish

none : No surface finish

6) Color conversion

Set whether or not to color conversion.

Not checked : Color conversion is not performed.

Checked : Color conversion is performed.

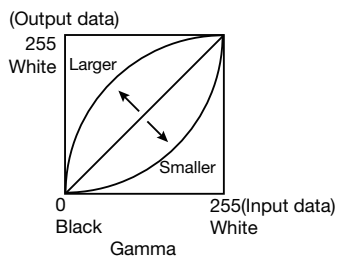
When “Feature Sets” of “Printer Features” is set to “Gamma”, “Brightness”, or “Contrast”, the menu display changes and the following settings become configurable.

7) Gamma

Adjusted value R, G, and B (-5 - +5)

Use this function to adjust the density of the middle tones.

When you want to increase the density of the middle tones, decrease the value of “Gamma”.

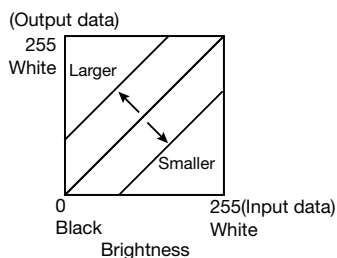


8) Brightness

Adjusted value R, G, and B (-64 - +64)

Use this function to adjust the brightness of the print picture.

When you want to make the print picture darker, decrease the value of “Brightness”.

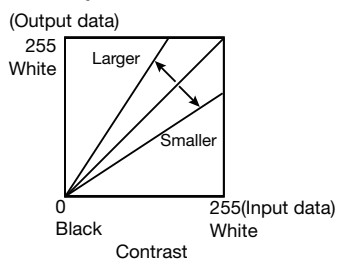


9) Contrast

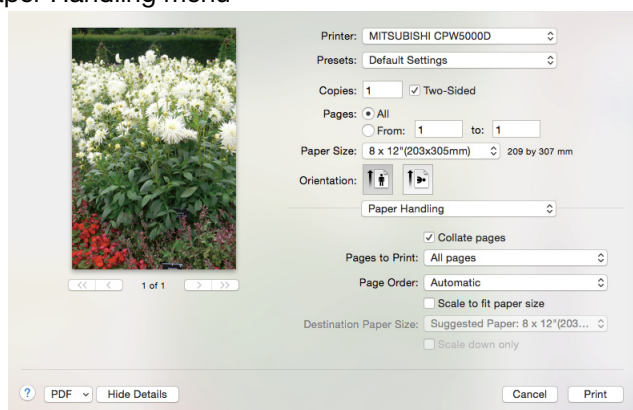
Adjusted value R, G, and B (-64 - +64)

Use this function to adjust the contrast of the print picture.

When you want to make the contrast of the print picture stronger, increase the value of "Contrast".



1.3. Paper Handling menu



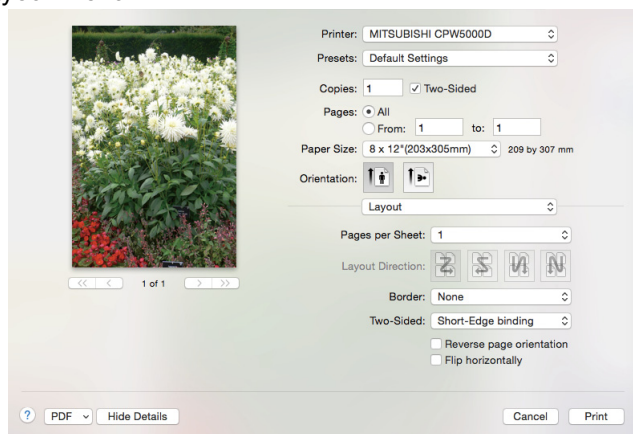
<Fig.15 Paper Handling menu>

1) Collate pages

Set the collated.

* This menu and the other menu in Paper Handling menu is the standard setting function of the operation system.

1.4. Layout menu



<Fig.16 Layout menu>

1) Two-Sided

The print side and binding edge are set.

None : Single-sided print.

Long-Edge binding : Flip on long edge on Two-sided print.

Short-Edge binding : Flip on short edge on Two-sided print.

[Notes]

- * If you choose the size of the landscape and square image, the direction you want to bind will be reversed.
Please set Long-Edge binding when you want to set Short-Edge binding.
Please set Short-Edge binding when you want to set Long-Edge binding.
(The size of the landscape and square image: 6 x 4", 6 x 6", 7 x 5", 8 x 4", 8 x 6", 8 x 8")
- * The other menu is the standard setting function of the operation system.

2. Error indication

No.	Error dialog message	Operation
1	Printer is not connected.	When the error is resolved, printing restarts.
2	Something is wrong with the printer.	
3	Paper size of printer driver and ink ribbon type do not match.	
4	Ink Ribbon Empty (xxxx)	The print job operations of the Print Queue screen are equipped as standard in the operating system. The buttons as follows are displayed.
5	Ink Ribbon End (xxxx)	
6	Ink Ribbon Error (xxxx)	
7	Front Cover Bin is not detected. (xxxx)	Delete Job: Deletes the job being selected in the Print Queue.
8	Paper Empty (xxxx)	
9	Top Cover is Open (xxxx)	
10	Slide Door is Open (xxxx)	Hold Job: Holds the job being selected in the Print Queue.
11	Cleaning Roller Cover is not detected. (xxxx)	
12	Paper End (xxxx)	
13	Paper remaining (xxxx)	Resume Job: Resumes printing of the held job being selected in the Print Queue.
14	Paper JAM (xxxx)	
15	Mechanical Error (xxxx)	
16	Fan Lock Error (xxxx)	
17	Thermal Print Head temperature is too high. (xxxx)	
18	Thermal Print Head temperature is too low. (xxxx)	
19	Operating temperature is too high. (xxxx)	
20	Operating temperature is too low. (xxxx)	
21	Operating humidity is too high. (xxxx)	
22	Sensor Error (xxxx)	
23	EEPROM Error (xxxx)	
24	LCD Access Error (xxxx)	
25	FLASH Access Error (xxxx)	
26	MDA Error	
27	Power voltage Error (xxxx)	
28	Transponder Access Error (xxxx)	
29	Printer driver settings is incorrect.	
30	Transfer image size is out of range.	
31	Printer is in menu mode.	
32	Preheat Error (xxxx)	
33	Thermal Protect Error (xxxx)	
34	Printer data transfer Error (xxxx)	
35	Humidity sensor Error (xxxx)	
36	Waste remaining (xxxx)	

* The error dialog messages are displayed in the Print Queue screen of "MITSUBISHI CPW5000D" which is displayed by clicking the "Open Print Queue" button in "Printers & Scanners".

"Printers & Scanners": "Print & Fax" in Mac OS X 10.6 and "Print & Scan" in Mac OS X 10.7 and 10.8.

* When no error message is displayed on the monitor and printing is not carried out, check the indicators on the front of the printer.

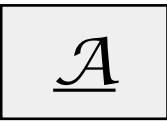
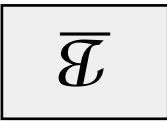
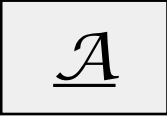
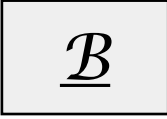



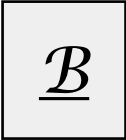
* For the details of the indicators on the printer, see the operation manual of CP-W5000 series printer.

- 1) Secure of Hard disk for spool file
Secure the capacity of Hard disk for spool file enough for the printer operation and the number of printing sheets.
The printing cannot be correctly carried out when the capacity is running short.
The drive for spool file is the same drive as the system drive usually.
- 2) Operation of the printer
Refer to the operation manual of the printer.
Do not turn off the power switch during data transfer or print.
If you turn off the power switch, restarting of a computer may be needed.
When deletion of a printing data cannot be performed, restarting of a computer is required.
- 3) About connection of a computer and a printer
Do not disconnect the interface cable during data transfer.
If the interface cable is disconnected, wait 1 minute or more after disconnecting the cable to connect it again. If the cable is connected without leaving an enough interval, the printer driver may not work correctly.
- 4) System requirements for USB interface
Use a personal computer that are USB-guaranteed by the manufacturer.
CP-W5000 series printer supports USB 2.0 (Hi-Speed USB) interface. As USB 2.0 is fully upward-compatible with USB 1.1, CP-W5000 series printer can be used with a personal computer that supports USB 1.1 interface.
To use CP-W5000 series printer based on USB 2.0 (Hi-Speed USB), connect with a personal computer that supports USB 2.0 (Hi-Speed USB). For USB 2.0 (Hi-Speed USB) compatibility of your personal computer, contact the manufacturer of the personal computer.
- 5) Connection of USB cable
When you take out and insert a USB cable after installation of a printer driver, wait 10 seconds or more after extracting a cable.
If the cable is reinserted without leaving an interval, the printer may not operate normally.
- 6) Print job
Do not delete the print job in the spooler during data transfer. When deleting it, do not start printing until the printer becomes to the initial status.
- 7) Number of prints
With some applications, the number of prints set by the printer driver does not work. Set the number of prints from the print dialog box of the application.
- 8) Errors during printing
When an error occurs during printing, it may not be displayed on the monitor. Check the indicator on the front of the printer and take the countermeasure, and then start printing procedure again. For the indication by the indicator of the printer and the countermeasure, see the operation manual of the printer.
- 9) When "Resume Job" is selected after "Hold Job" is performed in the Print Queue screen, an error may not be displayed even if it occurs. In this case, select "Hold Job" and resolve the error, then click "Resume Job" to resume printing.
- 10) "Add" of the "Printer List"
In some version of Mac OS X, you may not print images with the printer registered by the "Add" button. Make the computer recognize the printer by the procedure described in "Installation."
- 11) When the printer is turned off or a USB cable is not connected to the printer, the printer status may be displayed as standby. However, it does not affect the further printing operations.
- 12) In Mac OS X 10.6, when an error job is deleted without resolving the error, the error indication in the Print Queue may not be cancelled even if the error is resolved. In this case, delete the printer from the printer list, and then add it again to cancel the error indication.

- 13) When you pause or resume the printing or delete the job in the Print Queue while the printer driver is communicating with the printer such as during the printer error, the communication may fail and the deleted job may be printed.
- 14) When the size mismatch error occurs in Mac OS X 10.7, 10.8, 10.9, or 10.10 (See 2. Error indication No.3) and the failed job is deleted in the Print Queue without resolving the error, the printing may not be started even when the next print job is sent.
In this case, connect the USB cable again. The error indication is canceled in the Print Queue.
If you keep the USB cable connected, printing is started after a while.
- 15) Two-sided printing (job of two or more pages)
When Two-sided printing of two or more pages, if you print the odd number images, the side B of last page print out in blank page.
And the side B of the last print (blank page) will have the same finish as side A.
In Two-sided printing, it is recommended that you print the even number images.
- 16) Two-sided printing in Mac OS 10.7 to 10.10 (job of one page)
In Mac OS 10.7 to 10.10, when you print the job of one page at Two-sided printing, it becomes Single-sided printing and the print finish of back will be as specified by the setting of Print finish Back (for single side print).
When you print the job of one page, please set "Single-sided print" and "Print finish Back (for single side print)".
- 17) Two-sided printing in Mac OS 10.6 (job of one page)
In Mac OS 10.6, when you print the job of one page at Two-sided printing, it will not be printed out before sending the side B of the image.
If the image data of the side B is not sent within the time limit set by "TIME OUT", the side B will be blank page and its finish is the same as side A.

In Mac OS 10.6 when you print the job of one page in multiple copies on Two-sided printing, the same image is printed on the side A and the side B.
When you print the job of one page, please set "Single-sided print" and "Print finish Back (for single side print)".
- 18) Binding edge setting for the size of the landscape image
If you choose the size of the landscape and square image, the direction you want to bind will be reversed.
Please set Long-Edge binding when you want to set Short-Edge binding.
Please set Short-Edge binding when you want to set Long-Edge binding.
(The size of the landscape image: 6 x 4", 6 x 6", 7 x 5", 8 x 4", 8 x 6", 8 x 8")

* Paper size type and binding edge setting and printer output.

Paper size type	Binding edge setting	Side A	Side B
Landscape size	Short-Edge binding		
	Long-Edge binding		
Portrait size	Short-Edge binding		
	Long-Edge binding		

* In Mac OS 10.6 when you print the job of one page in multiple copies on Two-sided printing, landscape image size is always be on the short-edge binding and portlate image size is always be on the longedge binding independently of binding setting.

Operating directions for customer's purpose

1. When you want to adjust the color of the print image.
Set the following settings in "Feature Sets" of "Printer Features menu".
(Note that the effects are invalid on the display even if you make following setting.)
 - 1) When you want the density of entire print picture to be thick (dark), decrease the value of "Brightness".
 - 2) When the print picture is out of focus (the contrast is weak), increase the value of "Contrast".
The contrast becomes stronger.
 - 3) When you want to change the color of printout.
Change the value of "Brightness".

Increase Red	:Increase the "R" value.
Increase Green	:Increase the "G" value.
Increase Blue	:Increase the "B" value.

Prohibition matter

We prohibit Reverse Engineering, decompiling or reverse assembling of this driver software.

Exemption from responsibility

Occasionally, this software does not operate normally depending on operating environment.
Moreover, Mitsubishi Electric Co. will not assume any responsibility for damage (including, but not limited to, lost profit or damage caused from special circumstances etc.) occurring during the use of this driver.