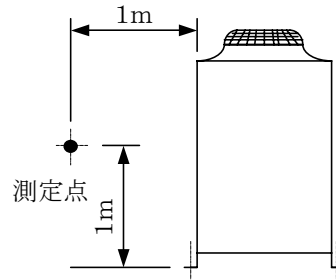
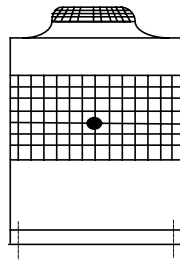


# 騒音分析成績表

PUD-P280 (V) M-E (-BS, -BSG)

測定場所: 無響音室  
計器: B&K



		63Hz	125Hz	250Hz	500Hz	1000Hz	2000Hz	4000Hz	8000Hz	A特性	
標準	50/60Hz	62.5	58.5	55.5	53	49.5	49	49	43	57	(dB)
ナイトモード	50/60Hz	60	56.5	50	45.5	41	38.5	38	39	49	(dB)

